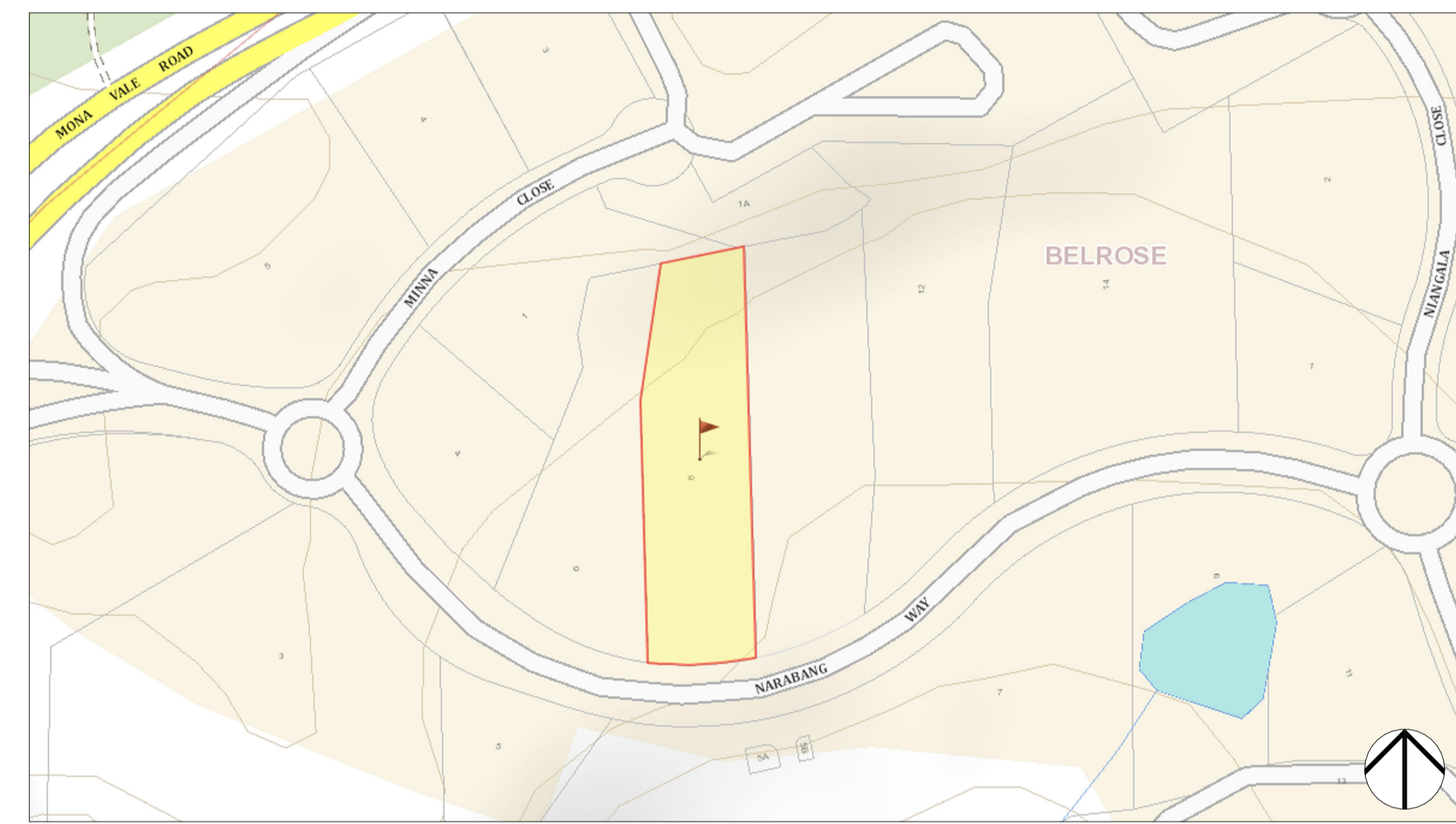


8 NARABANG WAY, BELROSE

MEZZANINE DEVELOPMENT APPLICATION

DRAWING LIST

000	COVER PAGE	NTS
100	GROUND FLOOR UNIT KEY PLAN	1:200
101	FIRST FLOOR UNIT KEY PLAN	1:200
102	SECOND FLOOR UNIT KEY PLAN	1:200
110	GROUND FLOOR PLAN - PART 1	1:100
111	GROUND FLOOR PLAN - PART 2	1:100
112	GROUND FLOOR MEZZANINE PLAN - PART 1	1:100
113	GROUND FLOOR MEZZANINE PLAN - PART 2	1:100
114	FIRST FLOOR PLAN - PART 2	1:100
115	FIRST FLOOR MEZZANINE PLAN - PART 2	1:100
116	SECOND FLOOR PLAN - PART 1	1:100
117	SECOND FLOOR MEZZANINE PLAN - PART 1	1:100
300	TYPICAL SECTIONS	1:50



1 LOCATION PLAN
NTS



3 ORIGINAL DA PERSPECTIVE 1



4 ORIGINAL DA PERSPECTIVE 2



2 SITE AERIAL
NTS

FIGGIS + JEFFERSON TEPA

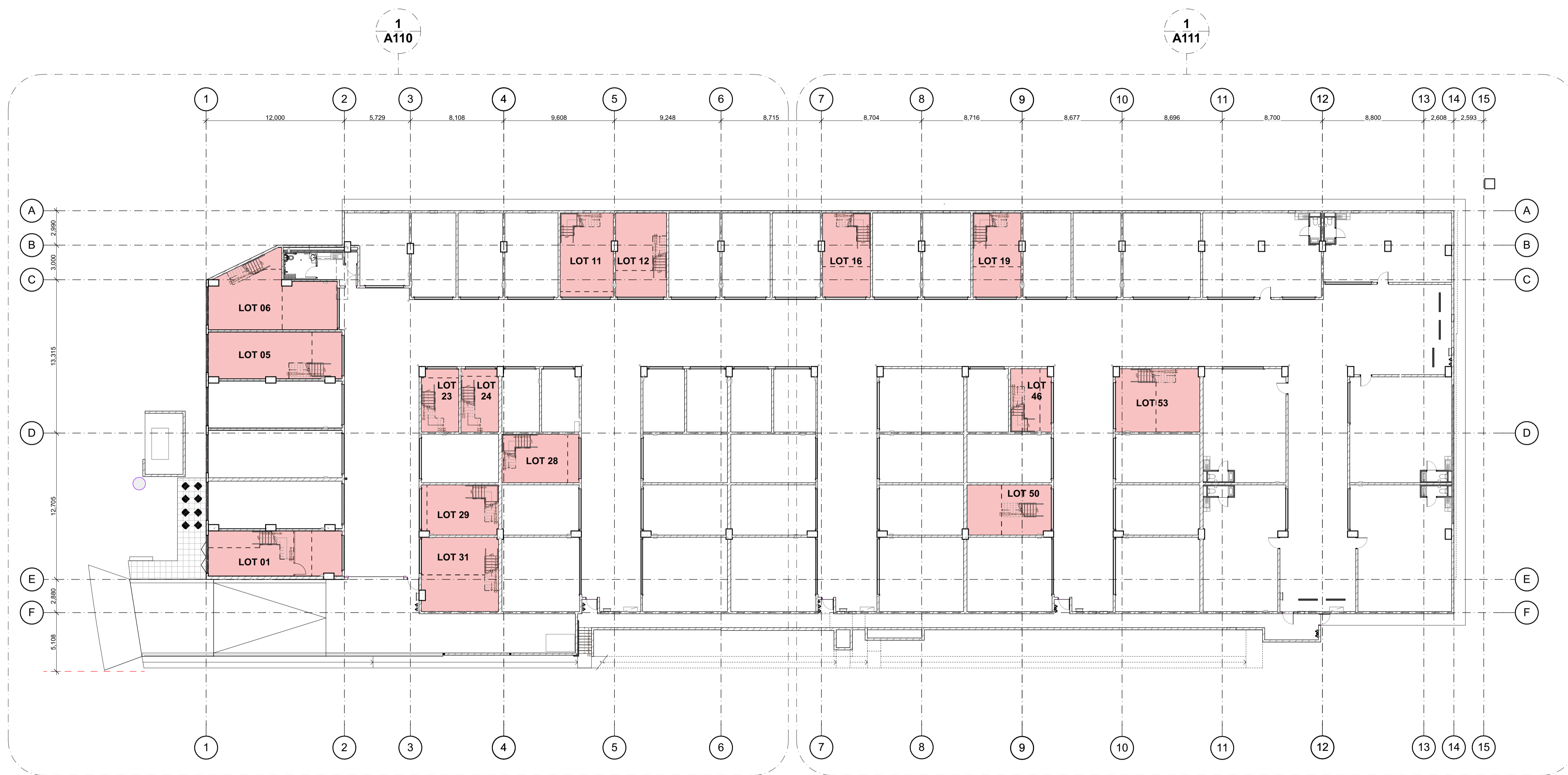
FIGGIS + JEFFERSON TEPA PTY LTD
220 Willoughby Road, Crows Nest, NSW 2065 Australia
T 02 9438 5555 E studio@figgis.com.au
F 02 9439 5163 W www.figgis.com.au
ACN 002 875 505 + NSW Architects Registration Board Nominated Architect Stephen Figgis 3565

PROJECT
8 NARABANG WAY - MEZZANINES
FOR
LIFE PROPERTY GROUP
AT
8 NARABANG WAY BELROSE NSW

DRAWING TITLE
COVER PAGE
ARCHITECT
JC
LAST PRINTED
22/12/2020

DRAWN
AC

DRAWING NO. ISSUE
3762 DA 000 A



1 GA GROUND FLOOR
1:200

FIGGIS + JEFFERSON TEP A

FIGGIS + JEFFERSON TEP A PTY LTD
 220 Willoughby Road, Crows Nest, NSW 2055 Australia
 T 02 9438 5555 E studio@figgis.com.au
 F 02 9439 5163 W www.fggis.com.au
 ACN 002 875 505 + NSW Architects Registration Board Nominated Architect Stephen Figgis 3565

This drawing is protected under the Copyright Act 1968 and is the copyright of Figgis and Jefferson Architects. Do not reproduce, modify or transmit this drawing without the permission of Figgis and Jefferson Architects. Do not scale this drawing. Use signed dimensions only. Confirm all dimensions and levels on site prior to commencement of any work, preparation of shop drawings or fabrication of components.

GENERAL NOTES:

1. ALL MEZZANINE HEIGHTS AND CLEARANCES TO COMPLY WITH NCC 2019 CLAUSE F3.1.
2. FOR CLASSIFICATION OF MEZZANINE AND UNIT USE REFER TO PLANNERS REPORT (SEE).
3. ALL STAIRS AND HANDRAILS / BALUSTRADES TO COMPLY WITH AS1428.1.
4. ALL BARRIERS TO COMPLY WITH NCC 2019 AND AS1428.1.
5. DOCUMENTS TO BE READ INCONJUNCTION WITH SEE / PLANNERS REPORT AND BCA REPORT.
6. BCA REPORT / PLANNERS SEE TO SPECIFY USE CLASSIFICATION TO DETERMINE MINIMUM HEAD HEIGHT CLEARANCES UNDER THE NCC 2019

LEGEND

UNITS PROPOSED TO HAVE MEZZANINES INSTALLED

PROJECT
8 NARABANG WAY - MEZZANINES
FOR
LIFE PROPERTY GROUP
AT
8 NARABANG WAY BELROSE NSW

DRAWING TITLE
GA GROUND FLOOR

ARCHITECT
JC

LAST PRINTED
26/05/2021

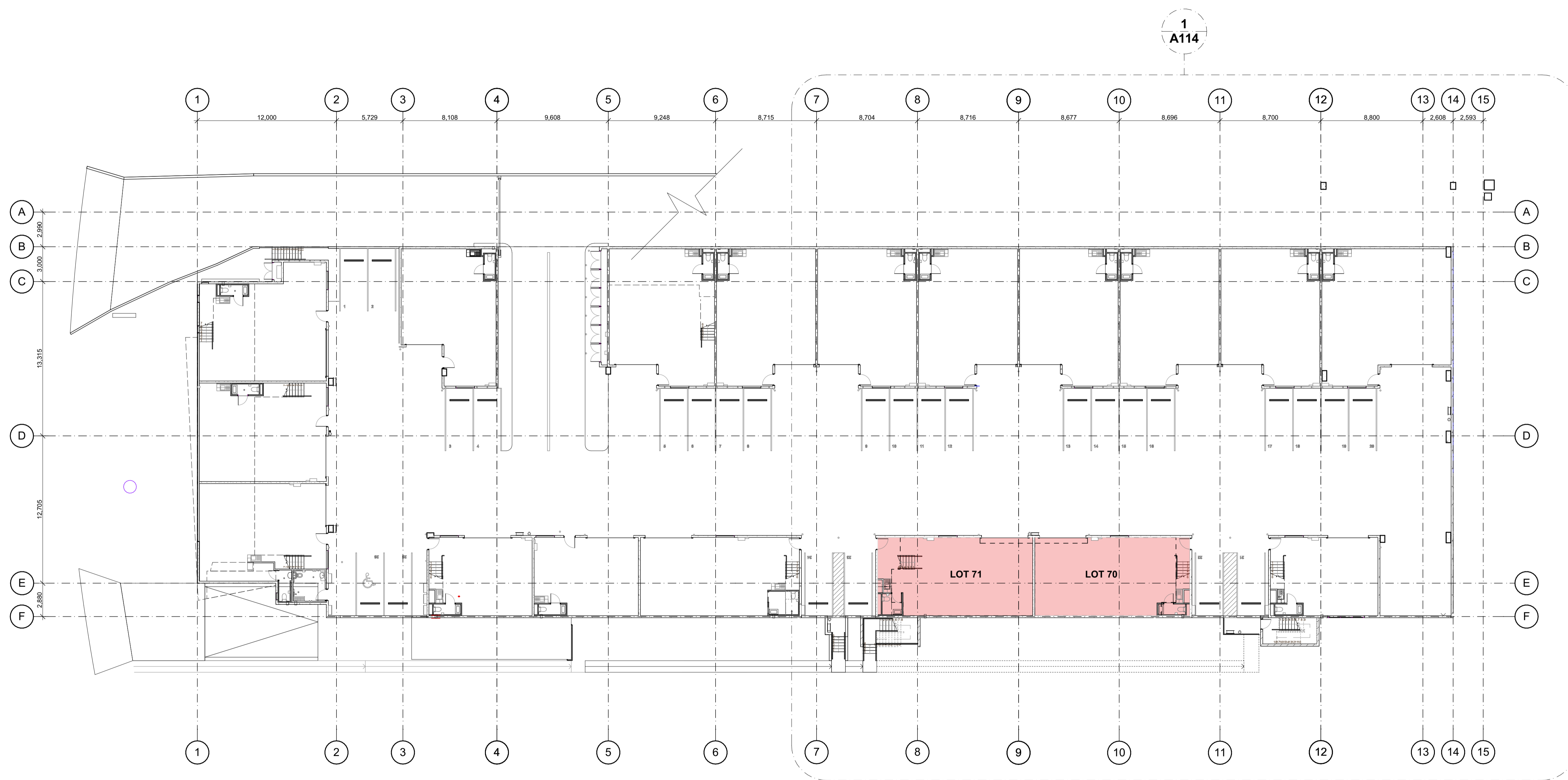
DRAWING NO.
3762 DA 100

DRAWN
AC

TRUE NORTH

ISSUE
B

SCALE
SCALE 0m 2 4 6 8 10



1 GA FIRST FLOOR
1:200

FIGGIS + JEFFERSON TEP A

FIGGIS + JEFFERSON TEP A PTY LTD
 220 Willoughby Road, Crows Nest, NSW 2065 Australia
 T 02 9438 5555 E studio@figgis.com.au
 F 02 9439 5163 W www.figgis.com.au
 ACN 002 875 505 + NSW Architects Registration Board Nominated Architect Stephen Figgis 3565

This drawing is protected under the Copyright Act 1968 and is the copyright of Figgis and Jefferson Architects. Do not reproduce, modify or transmit this drawing without the permission of Figgis and Jefferson Architects. Do not scale this drawing. Use figure dimensions only. Confirm all dimensions and levels on site prior to commencement of any work, preparation of shop drawings or fabrication of components.

GENERAL NOTES:

1. ALL MEZZANINE HEIGHTS AND CLEARANCES TO COMPLY WITH NCC 2019 CLAUSE F3.1.
2. FOR CLASSIFICATION OF MEZZANINE AND UNIT USE REFER TO PLANNERS REPORT (SEE).
3. ALL STAIRS AND HANDRAILS / BALUSTRADES TO COMPLY WITH AS1428.1.
4. ALL BARRIERS TO COMPLY WITH NCC 2019 AND AS1428.1.
5. DOCUMENTS TO BE READ INCONJUNCTION WITH SEE / PLANNERS REPORT AND BCA REPORT.
6. BCA REPORT / PLANNERS SEE TO SPECIFY USE CLASSIFICATION TO DETERMINE MINIMUM HEAD HEIGHT CLEARANCES UNDER THE NCC 2019

LEGEND

UNITS PROPOSED TO HAVE MEZZANINES INSTALLED

PROJECT
8 NARABANG WAY - MEZZANINES
FOR
LIFE PROPERTY GROUP
AT
8 NARABANG WAY BELROSE NSW

DRAWING TITLE
GA FIRST FLOOR

ARCHITECT
JC

LAST PRINTED
26/05/2021

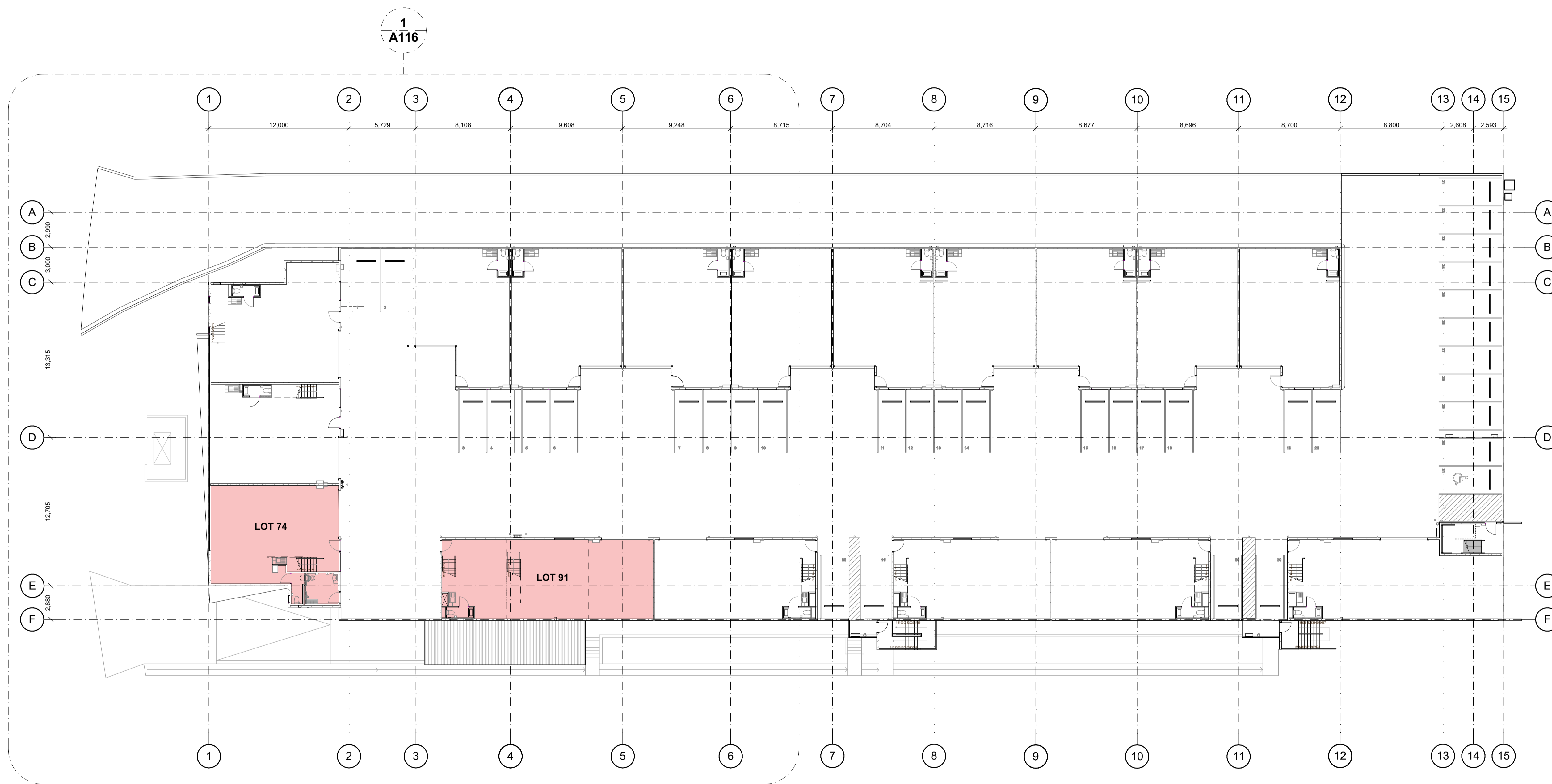
DRAWING NO.
3762 DA 101

DRAWN
AC

TRUE NORTH

ISSUE
B

SCALE
SCALE 0m 2 4 6 8 10



1 GA SECOND FLOOR
1:200

LEGEND
 UNITS PROPOSED TO HAVE MEZZANINES INSTALLED

GENERAL NOTES:

1. ALL MEZZANINE HEIGHTS AND CLEARANCES TO COMPLY WITH NCC 2019 CLAUSE F3.1.
2. FOR CLASSIFICATION OF MEZZANINE AND UNIT USE REFER TO PLANNERS REPORT (SEE).
3. ALL STAIRS AND HANDRAILS / BALUSTRADES TO COMPLY WITH AS1428.1.
4. ALL BARRIERS TO COMPLY WITH NCC 2019 AND AS1428.1.
5. DOCUMENTS TO BE READ INCONJUNCTION WITH SEE / PLANNERS REPORT AND BCA REPORT.
6. BCA REPORT / PLANNERS SEE TO SPECIFY USE CLASSIFICATION TO DETERMINE MINIMUM HEAD HEIGHT CLEARANCES UNDER THE NCC 2019

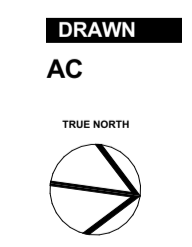
FIGGIS + JEFFERSON TEP A

FIGGIS + JEFFERSON TEP A PTY LTD
 220 Willoughby Road, Crows Nest, NSW 2065 Australia
 T 02 9438 5555 E studio@figgis.com.au
 F 02 9439 5163 W www.fggis.com.au
 ACN 002 875 505 + NSW Architects Registration Board Nominated Architect Stephen Figgis 3565

PROJECT
 8 NARABANG WAY - MEZZANINES
FOR
 LIFE PROPERTY GROUP
AT
 8 NARABANG WAY BELROSE NSW

DRAWING TITLE
 GA SECOND FLOOR
ARCHITECT
 JC
LAST PRINTED
 26/05/2021

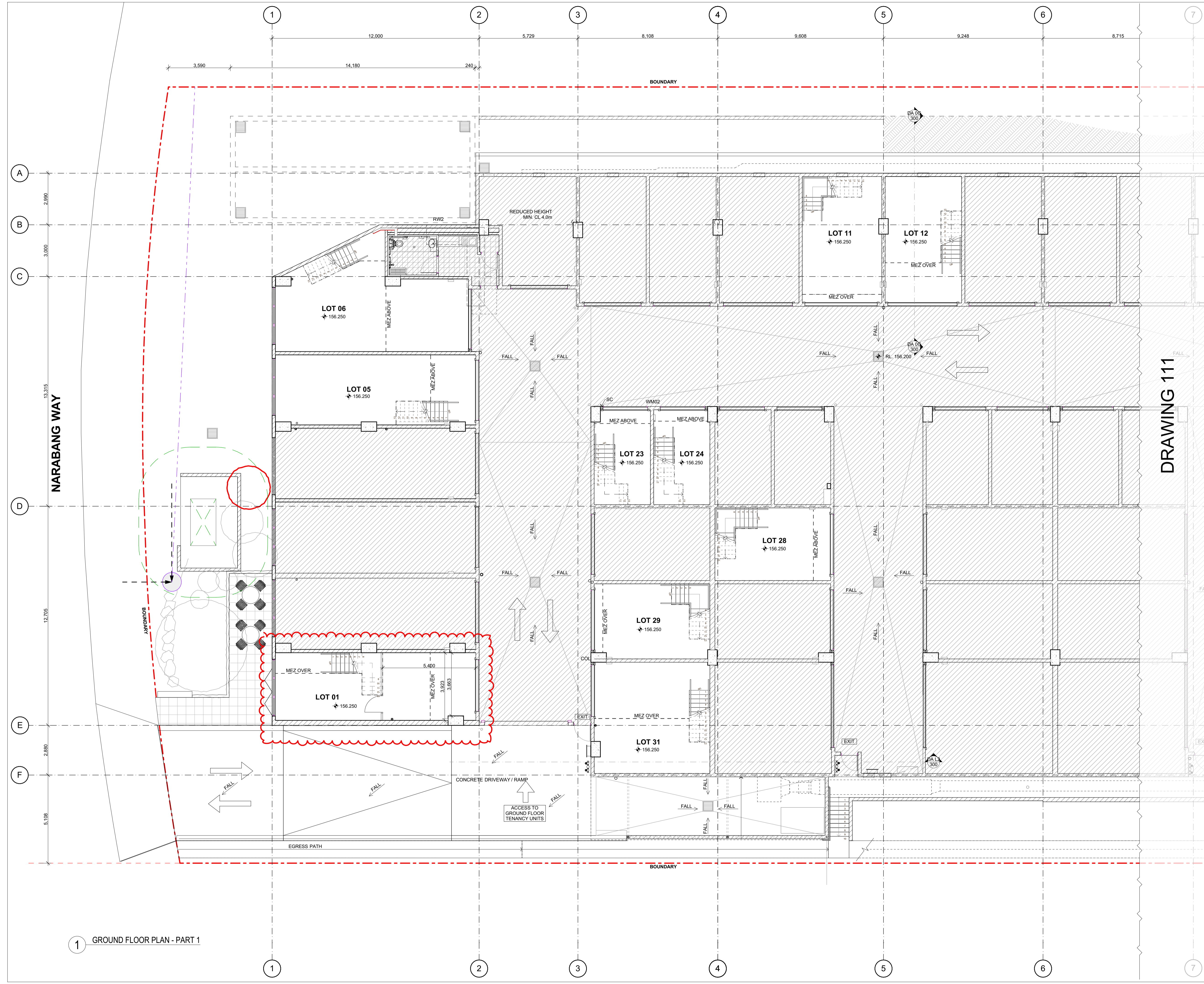
DRAWING NO.
 3762 DA 102
ISSUE
 B
 SCALE 0m 2 4 6 8 10



This drawing is protected under the Copyright Act 1968 and is the copyright of Figgis and Jefferson Architects. Do not reproduce, modify or transmit this drawing without the permission of Figgis and Jefferson Architects. Do not scale this drawing. Use signed dimensions only. Confirm all dimensions and levels on site prior to commencement of any work, preparation of shop drawings or fabrication of components.



ISSUE: DATE: DESCRIPTION:
 C 16/06/2021 REVISED ISSUED FOR DA LODGEMENT



- GENERAL NOTES:**
1. ALL MEZZANINE HEIGHTS AND CLEARANCES TO COMPLY WITH NCC 2019 CLAUSE F3.1.
 2. FOR CLASSIFICATION OF MEZZANINE AND UNIT USE REFER TO PLANNERS REPORT (SEE).
 3. ALL STAIRS AND HANDRAILS / BALUSTRADES TO COMPLY WITH AS1428.1.
 4. ALL BARRIERS TO COMPLY WITH NCC 2019 AND AS1428.1.
 5. DOCUMENTS TO BE READ INCONJUNCTION WITH SEE / PLANNERS REPORT AND BCA REPORT.
 6. BCA REPORT / PLANNERS SEE TO SPECIFY USE CLASSIFICATION TO DETERMINE MINIMUM HEAD HEIGHT CLEARANCES UNDER THE NCC 2019

LEGEND

	EXISTING BUILDING NOT INCLUDED IN THIS DA
--	---

FIGGIS + JEFFERSON TEPA

FIGGIS + JEFFERSON TEPA PTY LTD
 220 Willoughby Road, Crows Nest, NSW 2065 Australia
 T 02 9438 5555 E studio@figgis.com.au
 F 02 9439 5163 W www.figgis.com.au

PROJECT
 8 NARABANG WAY - MEZZANINES

FOR
 LIFE PROPERTY GROUP

AT
 8 NARABANG WAY BELROSE NSW

DRAWING TITLE
 GROUND FLOOR PLAN - PART 1

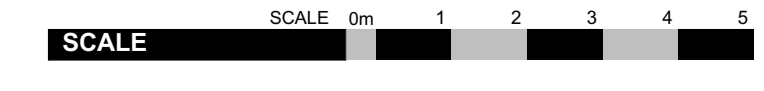
ARCHITECT
 JC

DRAWN
 AC

LAST PRINTED
 16/06/2021

DRAWING NO.
 3762 DA 110

ISSUE
 C



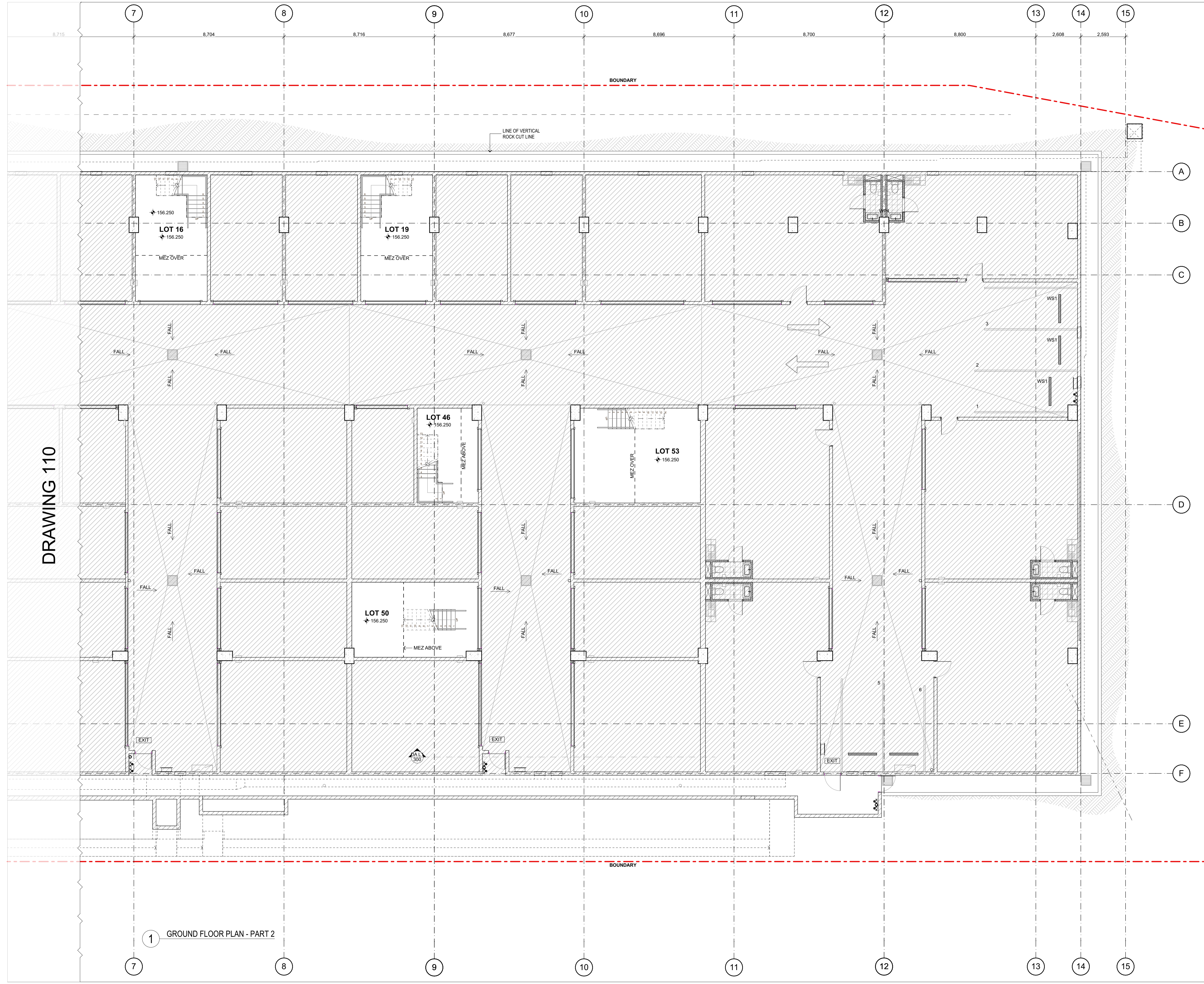
1 GROUND FLOOR PLAN - PART 1

DRAWING 111

NARABANG WAY



ISSUE: DATE: DESCRIPTION:
 B 26/05/2021 REVISED ISSUED FOR DA LODGEMENT



- GENERAL NOTES:**
1. ALL MEZZANINE HEIGHTS AND CLEARANCES TO COMPLY WITH NCC 2019 CLAUSE F3.1.
 2. FOR CLASSIFICATION OF MEZZANINE AND UNIT USE REFER TO PLANNERS REPORT (SEE).
 3. ALL STAIRS AND HANDRAILS / BALUSTRADES TO COMPLY WITH AS1428.1.
 4. ALL BARRIERS TO COMPLY WITH NCC 2019 AND AS1428.1.
 5. DOCUMENTS TO BE READ INCONJUNCTION WITH SEE / PLANNERS REPORT AND BCA REPORT.
 6. BCA REPORT / PLANNERS SEE TO SPECIFY USE CLASSIFICATION TO DETERMINE MINIMUM HEAD HEIGHT CLEARANCES UNDER THE NCC 2019

LEGEND

EXISTING BUILDING NOT INCLUDED IN THIS DA



FIGGIS + JEFFERSON TEPA PTY LTD
 220 Willoughby Road, Crows Nest, NSW 2065 Australia
 T 02 9438 5555 E studio@fggis.com.au
 F 02 9439 5163 W www.fggis.com.au
 ACN 002 875 505 + NSW Architects Registration Board Nominated Architect Stephen Figgis 3565

This drawing is protected under the Copyright Act 1968 and is the copyright of Figgis and Jefferson Architects. Do not reproduce, modify or transmit this drawing without the permission of Figgis and Jefferson Architects. Do not scale this drawing. Use signed dimensions only. Confirm all dimensions and levels on site prior to commencement of any work, preparation of shop drawings or fabrication of components.

PROJECT
 8 NARABANG WAY - MEZZANINES

FOR
 LIFE PROPERTY GROUP

AT
 8 NARABANG WAY BELROSE NSW

DRAWING TITLE
 GROUND FLOOR PLAN - PART 2

ARCHITECT
 JC

DRAWN
 AC

LAST PRINTED
 26/05/2021

TRUE NORTH

DRAWING NO.
 3762 DA 111

ISSUE
 B

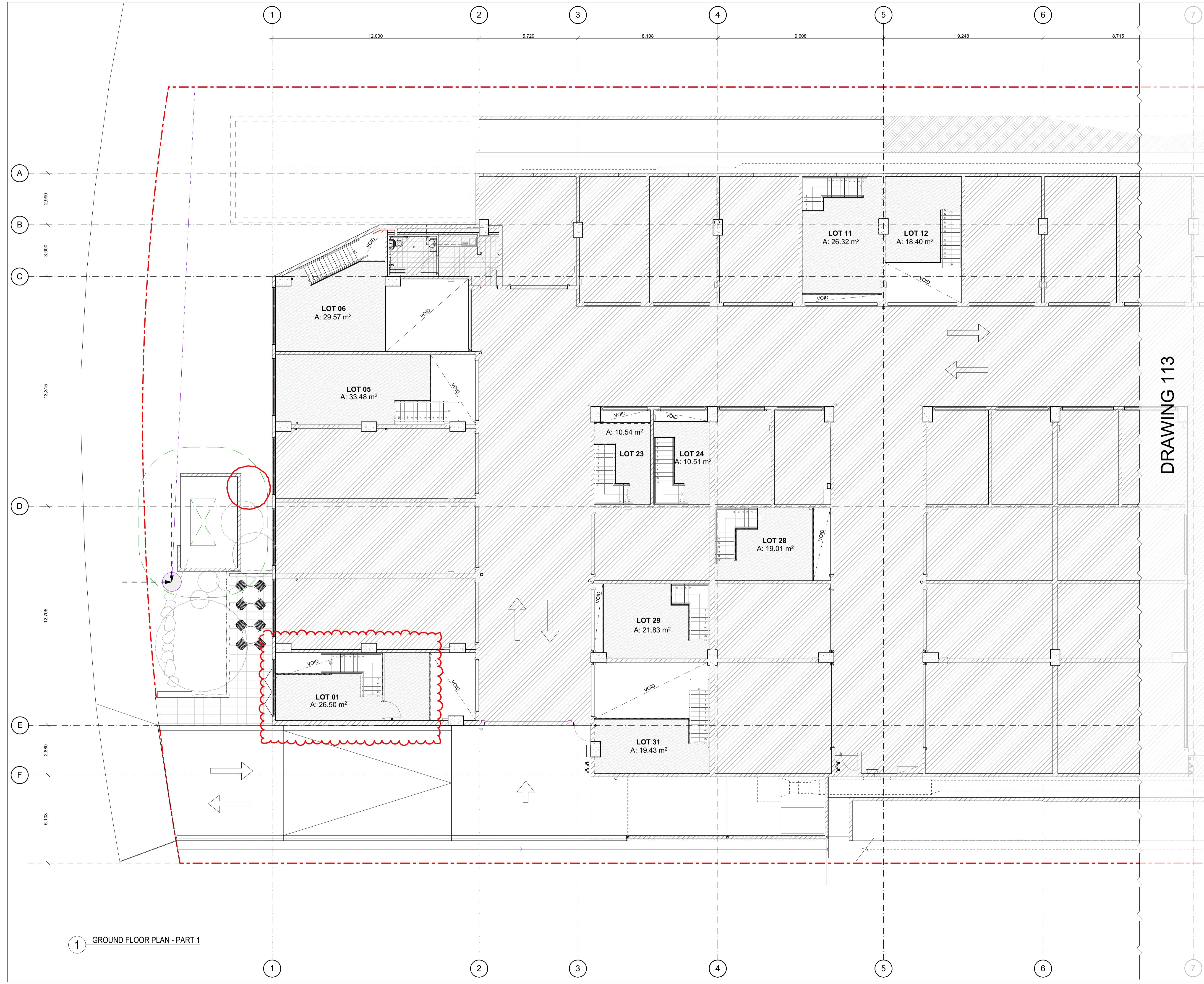
SCALE
 SCALE 0m 1 2 3 4 5

1 GROUND FLOOR PLAN - PART 2

DRAWING 110



ISSUE: DATE: DESCRIPTION:
 C 16/06/2021 REVISED ISSUED FOR DA LODGEMENT



- GENERAL NOTES:**
1. ALL MEZZANINE HEIGHTS AND CLEARANCES TO COMPLY WITH NCC 2019 CLAUSE F3.1.
 2. FOR CLASSIFICATION OF MEZZANINE AND UNIT USE REFER TO PLANNERS REPORT (SEE).
 3. ALL STAIRS AND HANDRAILS / BALUSTRADES TO COMPLY WITH AS1428.1.
 4. ALL BARRIERS TO COMPLY WITH NCC 2019 AND AS1428.1.
 5. DOCUMENTS TO BE READ INCONJUNCTION WITH SEE / PLANNERS REPORT AND BCA REPORT.
 6. BCA REPORT / PLANNERS SEE TO SPECIFY USE CLASSIFICATION TO DETERMINE MINIMUM HEAD HEIGHT CLEARANCES UNDER THE NCC 2019

LEGEND

	EXISTING BUILDING NOT INCLUDED IN THIS DA
	AREA OF PROPOSED MEZZANINE FLOOR

FIGGIS + JEFFERSON TEPA

FIGGIS + JEFFERSON TEPA PTY LTD
 220 Willoughby Road, Crows Nest, NSW 2065 Australia
 T: 02 9438 5555 E: studio@figgis.com.au
 F: 02 9439 5163 W: www.figgis.com.au
 ACN 002 875 505 + NSW Architects Registration Board Nominated Architect Stephen Figgis 3565

PROJECT
 8 NARABANG WAY - MEZZANINES
FOR
 LIFE PROPERTY GROUP
AT
 8 NARABANG WAY BELROSE NSW

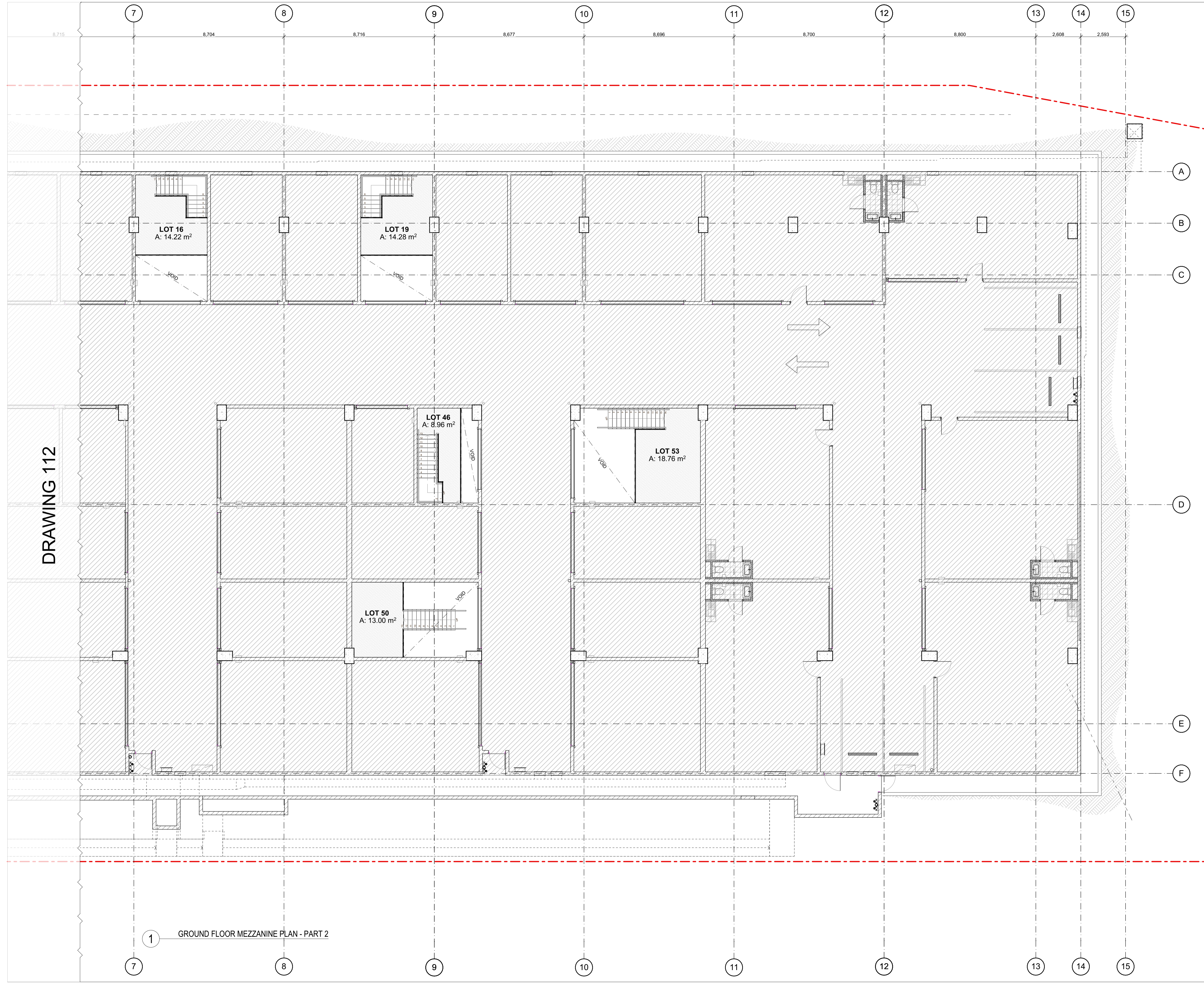
DRAWING TITLE
 GROUND FLOOR PLAN MEZZANINE - PART 1
ARCHITECT
 JC **DRAWN**
 AC
LAST PRINTED
 16/06/2021 **TRUE NORTH**

DRAWING NO.
 3762 DA 112 **ISSUE**
 C
SCALE
 SCALE 0m 1 2 3 4 5

1 GROUND FLOOR PLAN - PART 1



ISSUE: DATE: DESCRIPTION:
 B 26/05/2021 REVISED ISSUED FOR DA LODGEMENT



- GENERAL NOTES:**
1. ALL MEZZANINE HEIGHTS AND CLEARANCES TO COMPLY WITH NCC 2019 CLAUSE F3.1.
 2. FOR CLASSIFICATION OF MEZZANINE AND UNIT USE REFER TO PLANNERS REPORT (SEE).
 3. ALL STAIRS AND HANDRAILS / BALUSTRADES TO COMPLY WITH AS1428.1.
 4. ALL BARRIERS TO COMPLY WITH NCC 2019 AND AS1428.1.
 5. DOCUMENTS TO BE READ INCONJUNCTION WITH SEE / PLANNERS REPORT AND BCA REPORT.
 6. BCA REPORT / PLANNERS SEE TO SPECIFY USE CLASSIFICATION TO DETERMINE MINIMUM HEAD HEIGHT CLEARANCES UNDER THE NCC 2019

LEGEND

	EXISTING BUILDING NOT INCLUDED IN THIS DA
	AREA OF PROPOSED MEZZANINE FLOOR



FIGGIS + JEFFERSON TEPA PTY LTD
 220 Willoughby Road, Crows Nest, NSW 2065 Australia
 T: 02 9438 5555 E: studio@fggis.com.au
 F: 02 9439 5163 W: www.fggis.com.au
 ACN 002 875 505 + NSW Architects Registration Board Nominated Architect Stephen Figgis 3565

This drawing is protected under the Copyright Act 1968 and is the copyright of Figgis and Jefferson Architects. Do not reproduce, modify or transmit this drawing without the permission of Figgis and Jefferson Architects. Do not scale this drawing. Use legend dimensions only. Confirm all dimensions and levels on site prior to commencement of any work, preparation of shop drawings or fabrication of components.

PROJECT
 8 NARABANG WAY - MEZZANINES

FOR
 LIFE PROPERTY GROUP

AT
 8 NARABANG WAY BELROSE NSW

DRAWING TITLE
 GROUND FLOOR MEZZANINE PLAN - PART 2

ARCHITECT
 JC

DRAWN
 AC

LAST PRINTED
 26/05/2021

TRUE NORTH

DRAWING NO.
 3762 DA 113

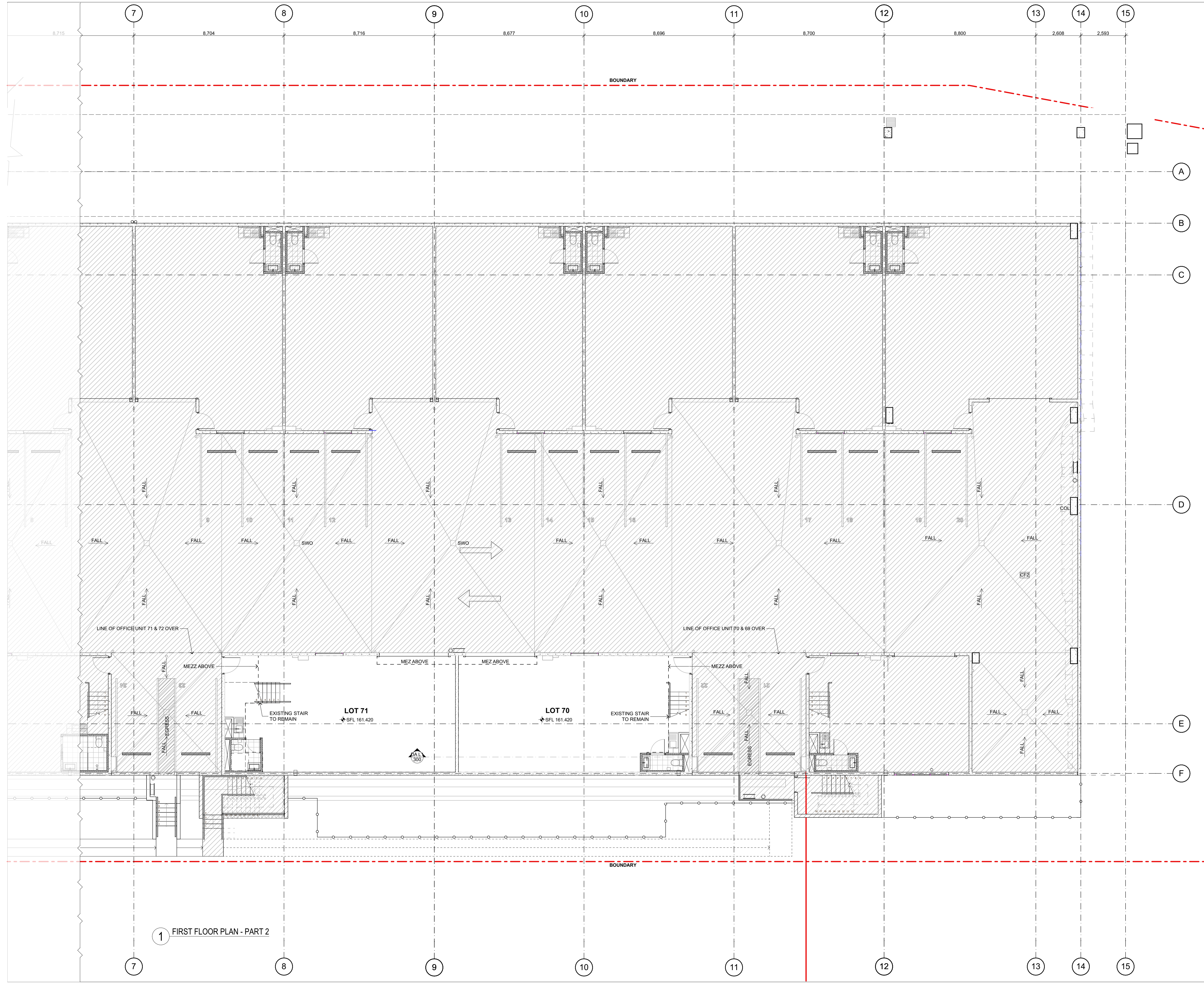
ISSUE
 B

SCALE
 SCALE 0m 1 2 3 4 5

1 GROUND FLOOR MEZZANINE PLAN - PART 2



ISSUE: DATE: DESCRIPTION:
 B 26/05/2021 REVISED ISSUED FOR DA LODGEMENT



- GENERAL NOTES:**
1. ALL MEZZANINE HEIGHTS AND CLEARANCES TO COMPLY WITH NCC 2019 CLAUSE F3.1.
 2. FOR CLASSIFICATION OF MEZZANINE AND UNIT USE REFER TO PLANNERS REPORT (SEE).
 3. ALL STAIRS AND HANDRAILS / BALUSTRADES TO COMPLY WITH AS1428.1.
 4. ALL BARRIERS TO COMPLY WITH NCC 2019 AND AS1428.1.
 5. DOCUMENTS TO BE READ INCONJUNCTION WITH SEE / PLANNERS REPORT AND BCA REPORT.
 6. BCA REPORT / PLANNERS SEE TO SPECIFY USE CLASSIFICATION TO DETERMINE MINIMUM HEAD HEIGHT CLEARANCES UNDER THE NCC 2019

LEGEND

EXISTING BUILDING NOT INCLUDED IN THIS DA



FIGGIS + JEFFERSON TEPA

FIGGIS + JEFFERSON TEPA PTY LTD
 220 Willoughby Road, Crows Nest, NSW 2065 Australia
 T 02 9438 5555 E studio@figgis.com.au
 F 02 9439 5163 W www.fggis.com.au

ACN 002 875 505 + NSW Architects Registration Board Nominated Architect Stephen Figgis 3565

This drawing is protected under the Copyright Act 1968 and is the copyright of Figgis and Jefferson Architects. Do not reproduce, modify or transmit this drawing without the permission of Figgis and Jefferson Architects. Do not scale this drawing. Use figure dimensions only. Confirm all dimensions and levels on site prior to commencement of any work, preparation of shop drawings or fabrication of components.

PROJECT
 8 NARABANG WAY - MEZZANINES

FOR
 LIFE PROPERTY GROUP

AT
 8 NARABANG WAY BELROSE NSW

DRAWING TITLE
 FIRST FLOOR PLAN - PART 2

ARCHITECT
 JC

LAST PRINTED
 26/05/2021

DRAWING NO.
 3762 DA 114

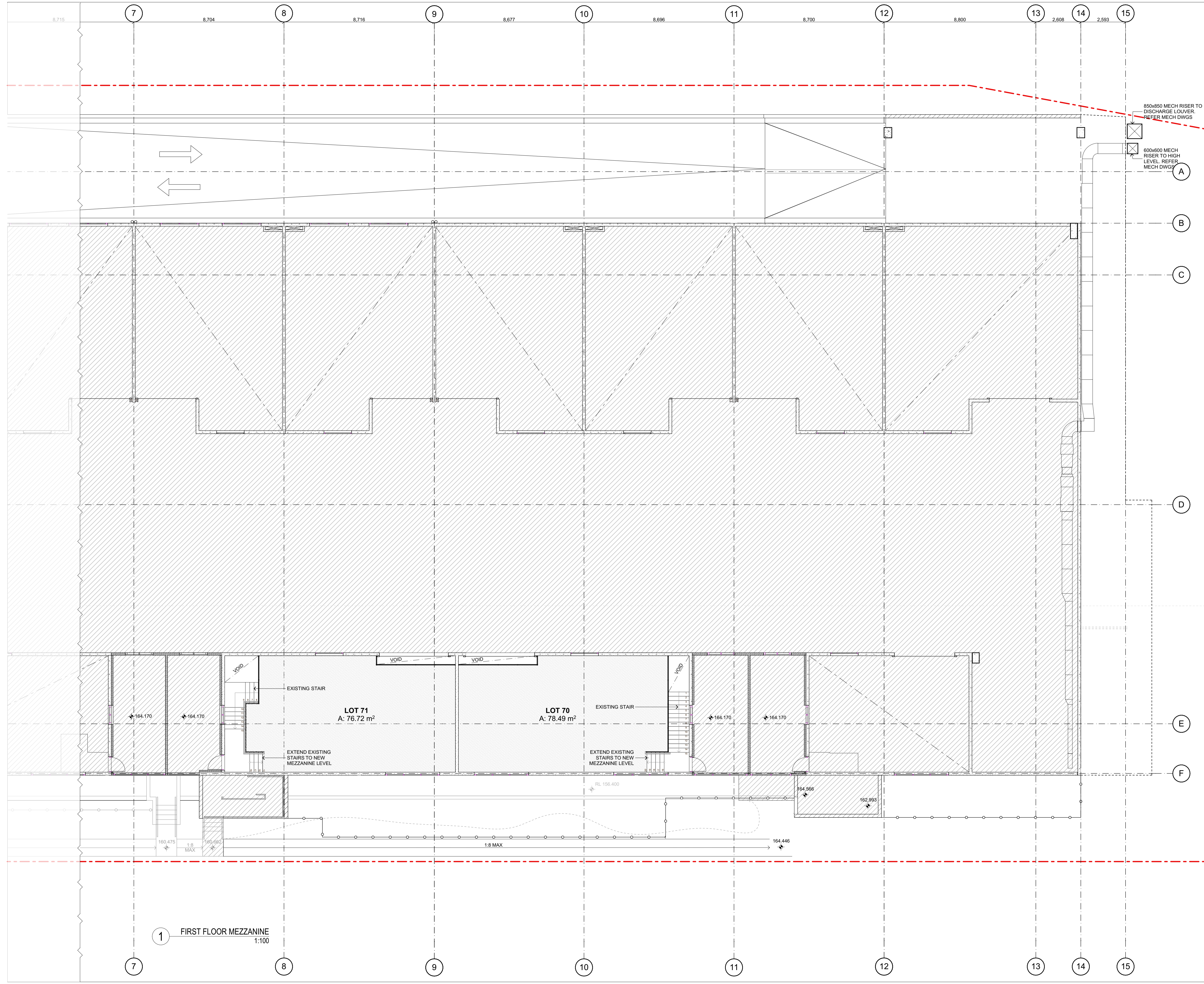
ISSUE
 B

SCALE
 SCALE 0m 1 2 3 4 5

1 FIRST FLOOR PLAN - PART 2



ISSUE: DATE: DESCRIPTION:
 B 26/05/2021 REVISED ISSUED FOR DA LODGEMENT



- GENERAL NOTES:**
1. ALL MEZZANINE HEIGHTS AND CLEARANCES TO COMPLY WITH NCC 2019 CLAUSE F3.1.
 2. FOR CLASSIFICATION OF MEZZANINE AND UNIT USE REFER TO PLANNERS REPORT (SEE).
 3. ALL STAIRS AND HANDRAILS / BALUSTRADES TO COMPLY WITH AS1428.1.
 4. ALL BARRIERS TO COMPLY WITH NCC 2019 AND AS1428.1.
 5. DOCUMENTS TO BE READ INCONJUNCTION WITH SEE / PLANNERS REPORT AND BCA REPORT.
 6. BCA REPORT / PLANNERS SEE TO SPECIFY USE CLASSIFICATION TO DETERMINE MINIMUM HEAD HEIGHT CLEARANCES UNDER THE NCC 2019

LEGEND

	EXISTING BUILDING NOT INCLUDED IN THIS DA
	AREA OF PROPOSED MEZZANINE FLOOR

FIGGIS + JEFFERSON TEP A

FIGGIS + JEFFERSON TEP A PTY LTD
 220 Willoughby Road, Crows Nest, NSW 2065 Australia
 T 02 9438 5555 E studio@figgis.com.au
 F 02 9439 5163 W www.fggis.com.au
 ACN 002 875 505 + NSW Architects Registration Board Nominated Architect Stephen Figgis 3565

This drawing is protected under the Copyright Act 1968 and is the copyright of Figgis and Jefferson Architects. Do not reproduce, modify or transmit this drawing without the permission of Figgis and Jefferson Architects. Do not scale this drawing. Use figure dimensions only. Confirm all dimensions and levels on site prior to commencement of any work, preparation of shop drawings or fabrication of components.

PROJECT
 8 NARABANG WAY - MEZZANINES

FOR
 LIFE PROPERTY GROUP

AT
 8 NARABANG WAY BELROSE NSW

DRAWING TITLE
 FIRST FLOOR MEZZANINE PLAN - PART 2

ARCHITECT
 JC

DRAWN
 AC

LAST PRINTED
 26/05/2021

TRUE NORTH

DRAWING NO.
 3762 DA 115

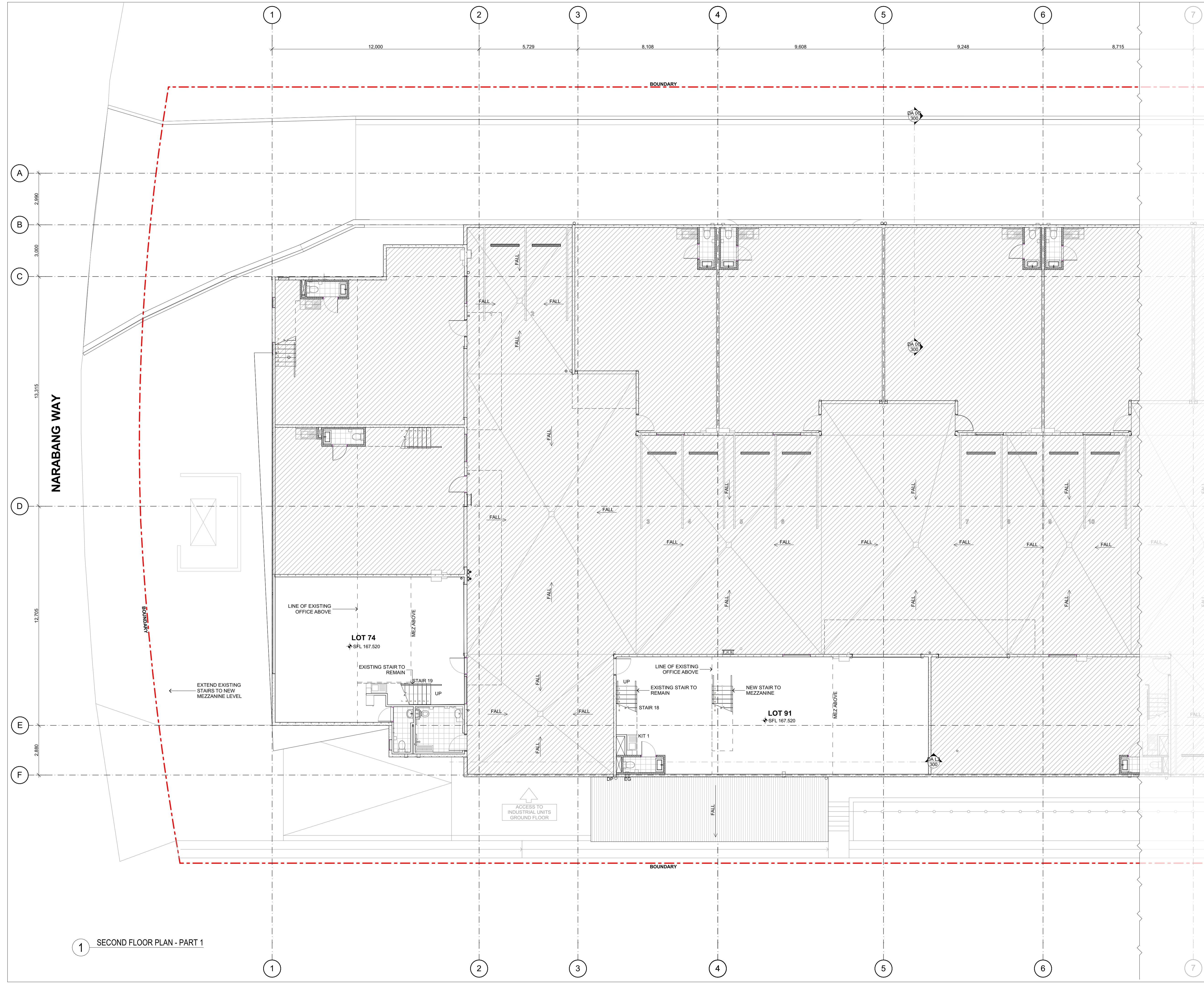
ISSUE
 B

SCALE
 SCALE 0m 1 2 3 4 5

1 FIRST FLOOR MEZZANINE
 1:100



ISSUE: DATE: DESCRIPTION:
 B 26/05/2021 REVISED ISSUED FOR DA LODGEMENT



- GENERAL NOTES:**
1. ALL MEZZANINE HEIGHTS AND CLEARANCES TO COMPLY WITH NCC 2019 CLAUSE F3.1.
 2. FOR CLASSIFICATION OF MEZZANINE AND UNIT USE REFER TO PLANNERS REPORT (SEE).
 3. ALL STAIRS AND HANDRAILS / BALUSTRADES TO COMPLY WITH AS1428.1.
 4. ALL BARRIERS TO COMPLY WITH NCC 2019 AND AS1428.1.
 5. DOCUMENTS TO BE READ INCONJUNCTION WITH SEE / PLANNERS REPORT AND BCA REPORT.
 6. BCA REPORT / PLANNERS SEE TO SPECIFY USE CLASSIFICATION TO DETERMINE MINIMUM HEAD HEIGHT CLEARANCES UNDER THE NCC 2019

LEGEND

EXISTING BUILDING NOT INCLUDED IN THIS DA

FIGGIS + JEFFERSON TEPA

FIGGIS + JEFFERSON TEPA PTY LTD
 220 Willoughby Road, Crows Nest, NSW 2065 Australia
 T 02 9438 5555 E studio@figgis.com.au
 F 02 9439 5163 W www.fggis.com.au
 ACN 002 875 505 + NSW Architects Registration Board Nominated Architect Stephen Figgis 3565

This drawing is prepared under the Copyright Act 1968 and is the copyright of Figgis and Jefferson Architects. Do not reproduce, modify or transmit this drawing without the permission of Figgis and Jefferson Architects. Do not scale this drawing. Use signed dimensions only. Confirm all dimensions and levels on site prior to commencement of any work, preparation of shop drawings or fabrication of components.

PROJECT
 8 NARABANG WAY - MEZZANINES

FOR
 LIFE PROPERTY GROUP

AT
 8 NARABANG WAY BELROSE NSW

DRAWING TITLE
 SECOND FLOOR PLAN - PART 1

ARCHITECT
 JC

DRAWN
 AC

LAST PRINTED
 26/05/2021

TRUE NORTH

DRAWING NO.
 3762 DA 116

ISSUE
 B

SCALE
 SCALE 0m 1 2 3 4 5

1 SECOND FLOOR PLAN - PART 1



ISSUE: DATE: DESCRIPTION:
 B 26/05/2021 REVISED ISSUED FOR DA LODGEMENT

- GENERAL NOTES:**
1. ALL MEZZANINE HEIGHTS AND CLEARANCES TO COMPLY WITH NCC 2019 CLAUSE F3.1.
 2. FOR CLASSIFICATION OF MEZZANINE AND UNIT USE REFER TO PLANNERS REPORT (SEE).
 3. ALL STAIRS AND HANDRAILS / BALUSTRADES TO COMPLY WITH AS1428.1.
 4. ALL BARRIERS TO COMPLY WITH NCC 2019 AND AS1428.1.
 5. DOCUMENTS TO BE READ INCONJUNCTION WITH SEE / PLANNERS REPORT AND BCA REPORT.
 6. BCA REPORT / PLANNERS SEE TO SPECIFY USE CLASSIFICATION TO DETERMINE MINIMUM HEAD HEIGHT CLEARANCES UNDER THE NCC 2019

- LEGEND**
- EXISTING BUILDING NOT INCLUDED IN THIS DA
 - AREA OF PROPOSED MEZZANINE FLOOR
 - NEW WALLS
 - WALLS TO BE DEMOLISHED

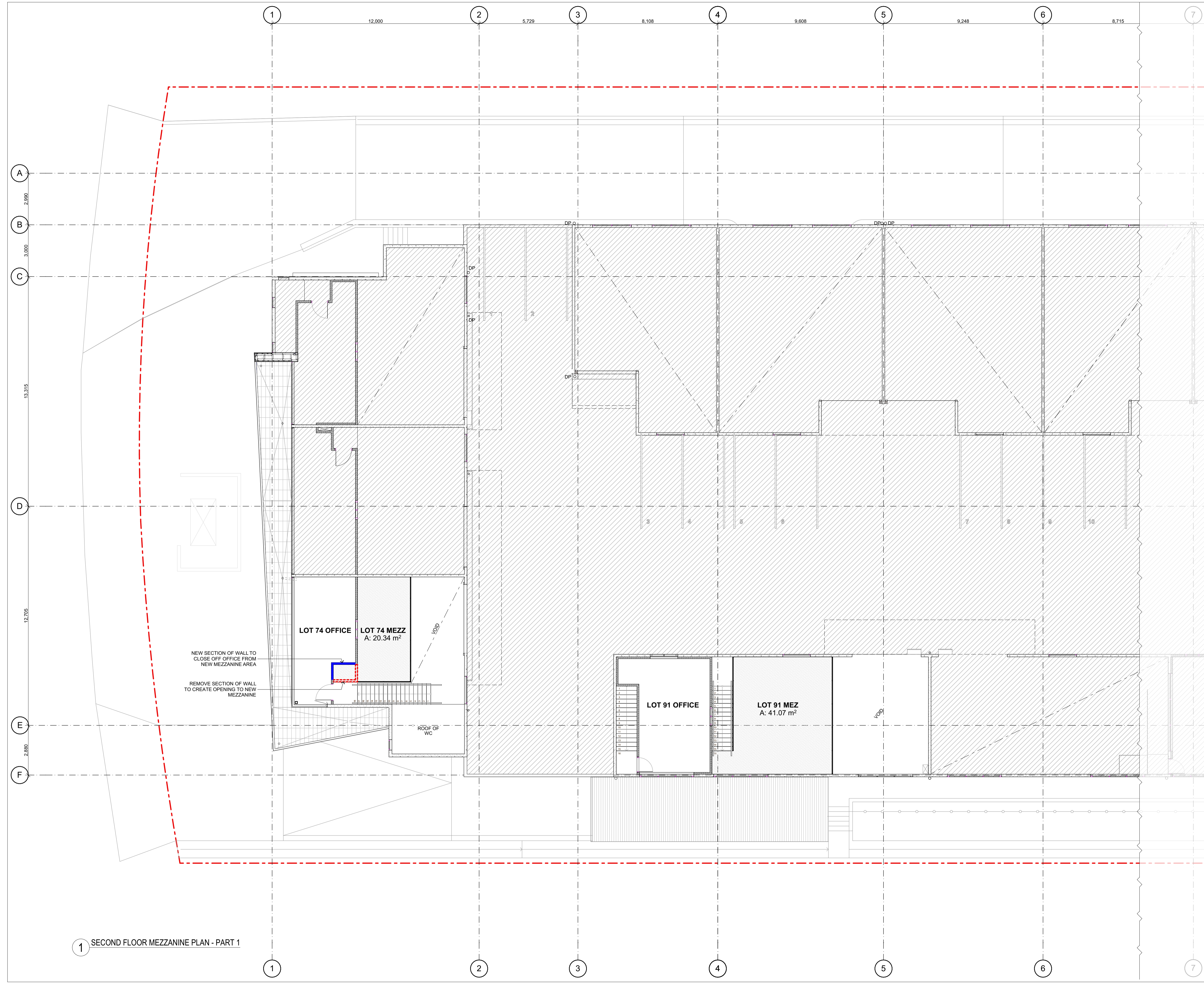
FIGGIS + JEFFERSON TEPA

FIGGIS + JEFFERSON TEPA PTY LTD
 220 Willoughby Road, Crows Nest, NSW 2065 Australia
 T 02 9438 5555 E studio@fggis.com.au
 F 02 9439 5163 W www.fggis.com.au
 ACN 002 875 505 + NSW Architects Registration Board Nominated Architect Stephen Figgis 3565

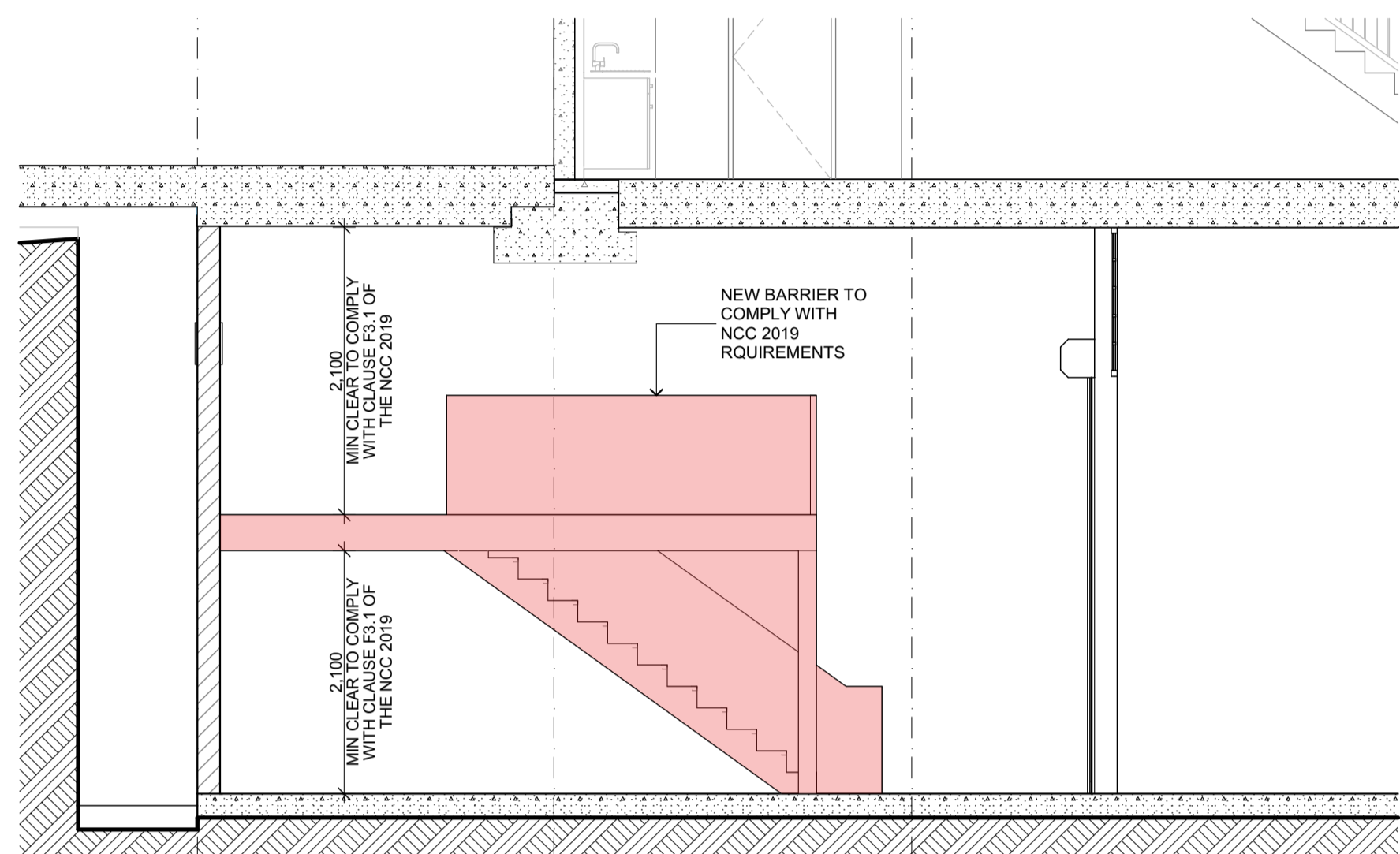
PROJECT
 8 NARABANG WAY - MEZZANINES
FOR
 LIFE PROPERTY GROUP
AT
 8 NARABANG WAY BELROSE NSW

DRAWING TITLE
 SECOND FLOOR MEZZANINE PLAN - PART 1
ARCHITECT
 JC **DRAWN**
 AC
LAST PRINTED
 26/05/2021 **TRUE NORTH**

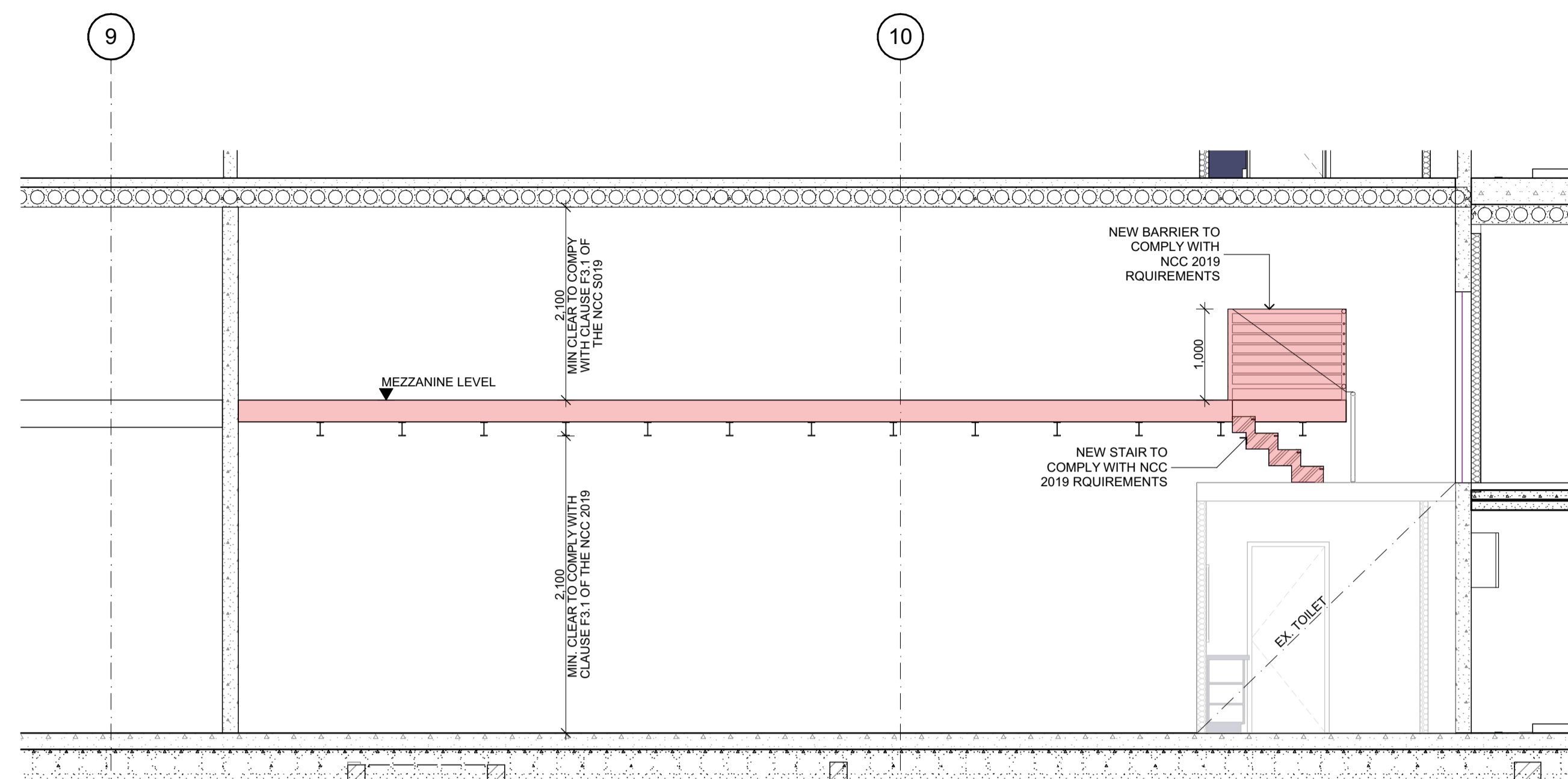
DRAWING NO.
 3762 DA 117 **ISSUE**
 B
SCALE
 SCALE 0m 1 2 3 4 5



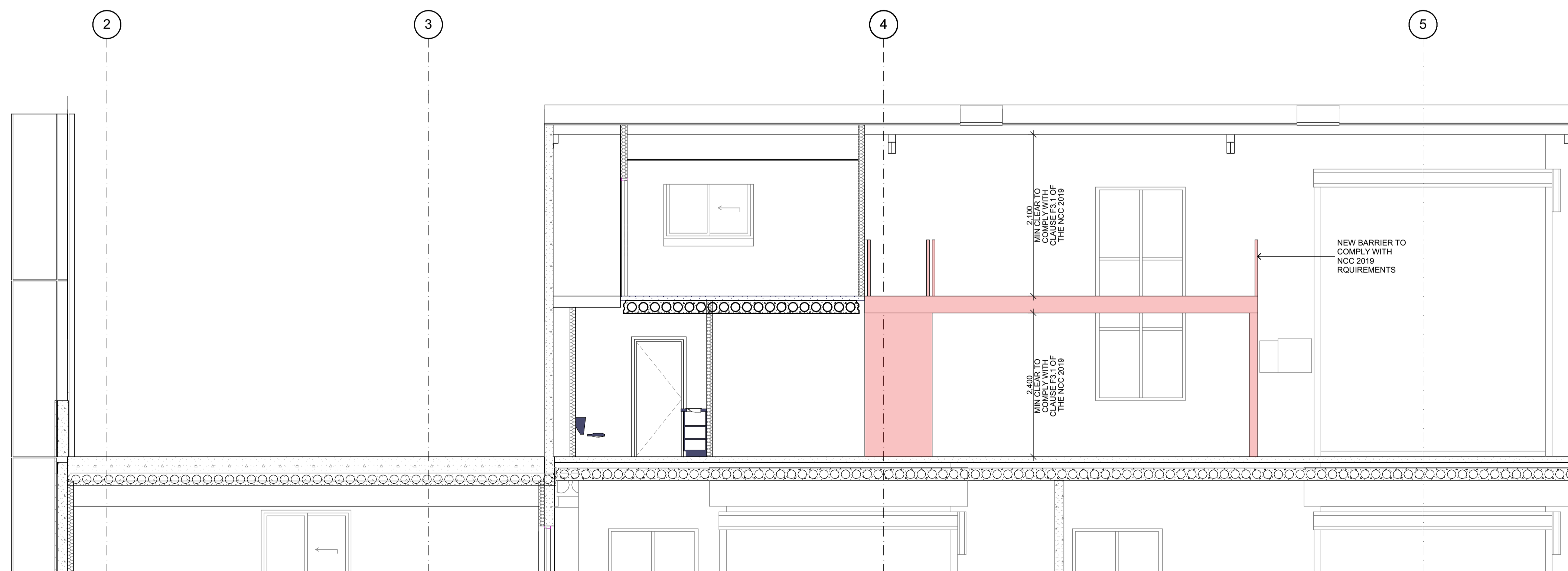
1 SECOND FLOOR MEZZANINE PLAN - PART 1



1 TYPICAL GROUND FLOOR MEZZANINE SECTION



2 TYPICAL FIRST FLOOR MEZZANINE SECTION



3 TYPICAL SECOND FLOOR MEZZANINE SECTION

- GENERAL NOTES:**
1. ALL MEZZANINE HEIGHTS AND CLEARANCES TO COMPLY WITH NCC 2019 CLAUSE F3.1.
 2. FOR CLASSIFICATION OF MEZZANINE AND UNIT USE REFER TO PLANNERS REPORT (SEE).
 3. ALL STAIRS AND HANDRAILS / BALUSTRADES TO COMPLY WITH AS1428.1.
 4. ALL BARRIERS TO COMPLY WITH NCC 2019 AND AS1428.1.
 5. DOCUMENTS TO BE READ IN CONJUNCTION WITH SEE / PLANNERS REPORT AND BCA REPORT.
 6. BCA REPORT / PLANNERS SEE TO SPECIFY USE CLASSIFICATION TO DETERMINE MINIMUM HEAD HEIGHT CLEARANCES UNDER THE NCC 2019

LEGEND

UNITS PROPOSED TO HAVE MEZZANINES INSTALLED

FIGGIS + JEFFERSON TEPA

FIGGIS + JEFFERSON TEPA PTY LTD
 220 Willoughby Road, Crows Nest, NSW 2065 Australia
 T 02 9438 5555 E studio@figgis.com.au
 F 02 9439 5163 W www.figgis.com.au
 ACN 002 875 505 + NSW Architects Registration Board Nominated Architect Stephen Figgis 3565

PROJECT
 8 NARABANG WAY - MEZZANINES
FOR
 LIFE PROPERTY GROUP
AT
 8 NARABANG WAY BELROSE NSW

DRAWING TITLE
 TYPICAL SECTIONS

ARCHITECT
 JC

LAST PRINTED
 22/12/2020

DRAWING NO.
 3762 DA 300

DRAWN
 AC



ISSUE
 A

SCALE
 SCALE 0m 1 2 3 4 5