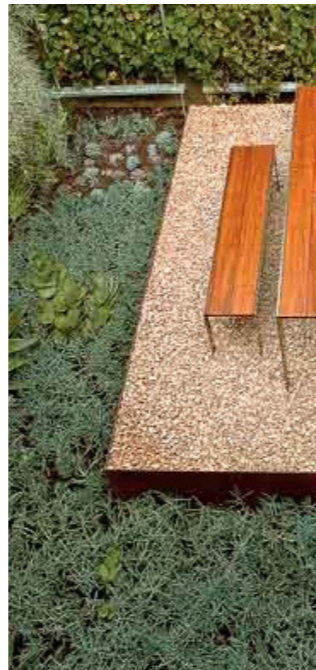
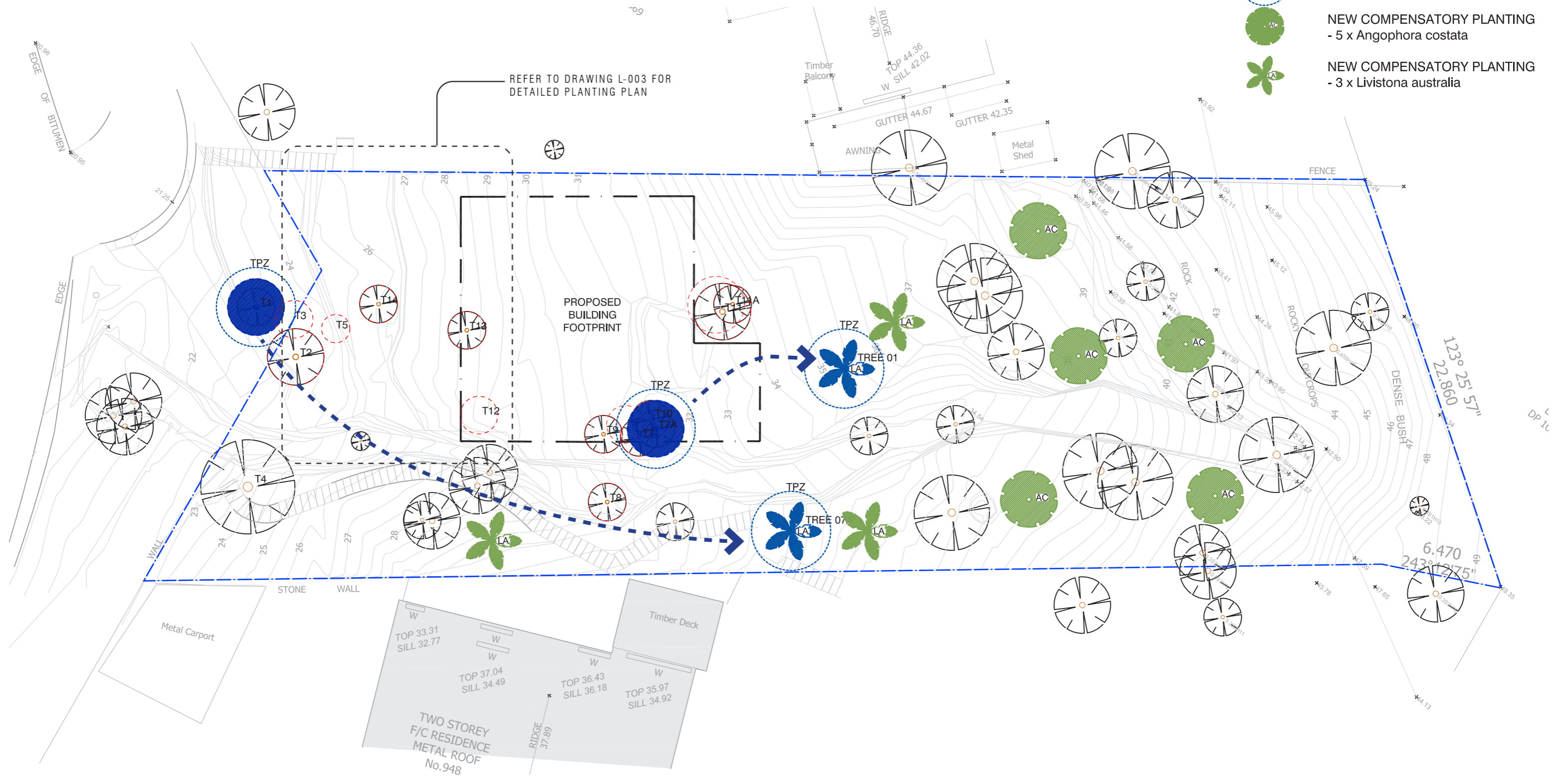


WILLIAMS HOUSE 950 BARRENJOEY RD LANDSCAPE PACKAGE



- T5 EXISTING TREE TO BE REMOVED
- EXISTING TREE TO BE RELOCATED ON SITE
- TREE 01
LA NEW LOCATION FOR RELOCATED TREE
- AC NEW COMPENSATORY PLANTING
- 5 x Angophora costata
- LA NEW COMPENSATORY PLANTING
- 3 x Livistona australia



REV	DATE	REV	DATE
A	15.12.21		



Angophora costata
Smooth Barked Apple



Eleocharpus reticulatis
Blueberry Ash



Livistona australia
Cabbage Tree Palm

PLANTING SCHEDULE

Species	Common Name	Spacing	Pot Size	No.	Community*
Trees					
Angophora costata	Smooth Barked Apple	As Shown	75L	5	PSGF
Eleocharpus reticulatis	Blueberry Ash	As shown	75L	3	PSGF
Livistona australis	Cabbage Tree Palm	As shown	75L	3	PSGF
Shrubs					
Asplenium australasicum	Birds Nest Fern	As Shown	10L	7	LRC
Alpinia caerulea	Native Ginger	As shown	300mm	12	LRC
Cordyline congesta	Palm Lily	500mm	25L	6	LRC
Dicksonia antarctica	Tree Fern	As shown	25L	4	LRC
Dianella caerulea	Blue Flax Lily	400mm	150mm	3	LRC
Libertia paniculata	Libertia	600mm	150mm	9	-
Macrozamia communis	Burrawang	As shown	10L	2	PSGF
Syzygium australe	Bush Cherry	As Shown	25L	3	LRC
Xanthorrhoea macronema	Grass Tree	As shown	25L	4	PSGF
Groundcovers					
Cissus antarctica	Kangaroo Vine	500mm	140mm	30	LRC
Casuarina glauca prostrate	Cousin It	500mm	140mm	38	-
Pandorea pandorana	Womga Wonga Vine	400mm	140mm	25	LRC

Plant Community

*PSGF = Pittwater Spotted Gum Forest Species

* LRC = Littoral Rainforest Community



Macrozamia macronema
Burrawang



Dianella caerulea
FLAX LILY



Cordyline congesta
PALM LILY



Alpinia caerulea
NATIVE GINGER



Asplenium australasicum
BIRDS NEST FERN



Xanthorrhoea macronema
GRASS TREE



Cissus antarctica
Kangaroo Vine



Casurina glauca prostrate
Cousin itt



Pandorea pandorana
Wonga Wonga Vine

Species selection is based on suitability to site conditions and accordance with Endangered Ecological Communities of Pittwater Spotted Gum Forest and East Coast Littoral Rainforest as listed by the Department of Environment & Climate Change NSW and the NSW Department of Planning, Industry and Environment.

If any landscape materials/components or planting fails, they are to be replaced with similar materials/components. Trees, shrubs and groundcovers required to be planted under this consent are to be mulched, watered and fertilised as required at the time of planting.

If any tree, shrub or groundcover required to be planted under this consent fails, they are to be replaced with similar species to maintain the landscape theme and be generally in accordance with the approved Landscape Plan and any conditions of consent.

All weeds are to be removed and controlled in accordance with the NSW Biosecurity Act 2015.

Modification: contents of planter under house removed, shown in blue rectangle.

Raised concrete planter box on elevated slab 1m soil depth

Raised concrete planter box on elevated slab 1m soil depth

30xCa
5xCc

AWNING

GUTTER 44.1

Building over shown dashed

Crushed sandstone gravel on slab

- 3 x Sa
- 1 x Xm
- 3 x Pp
- 9 x Lp
- 1 x Xm
- 5 x Pp
- 15 x Pp
- 1 x Xm
- 3 x Dc
- 38 x Cg
- 3 x Pp
- 1 x Xm
- 1 x Mc
- 4 x Aa
- 1 x Da
- 1 x Cc
- 1 x ER

Symbol	Species	Common Name
Trees		
	<i>Angophora costata</i>	AC Smooth Barked Apple
	<i>Eleocharis reticulata</i>	ER Blueberry Ash
	<i>Livistona australis</i>	LA Cabbage Tree Palm
Shrubs		
	<i>Asplenium australasicum</i>	Aa Birds Nest Fern
	<i>Alpinia caerulea</i>	Aca Native Ginger
	<i>Cordyline congesta</i>	Cc Palm Lily
	<i>Dicksonia antarctica</i>	Da Tree Fern
	<i>Dianella caerulea</i>	Dc Blue Flax Lily
	<i>Libertia paniculata</i>	Lp Libertia
	<i>Macrozamia communis</i>	Ma Burrawang
	<i>Syzygium australe</i>	Sa Brush Cherry
	<i>Xanthorrhoea macronema</i>	Xm Grass Tree
Groundcovers		
	<i>Cissus antarctica</i>	Ca Kangaroo Vine
	<i>Casuarina glauca prostrate</i>	Cg Cousin It
	<i>Pandorea pandorana</i>	Pp Wonga Wonga Vine

